

ENER-JOY SCULPTURE FOR MARSHALLTOWN

A sculpture proposal

by Harold Linke especially for the

- Marshalltown Performing Arts Foundation*
- Marshalltown Community School District/High School*
- And the Marshalltown Public Art Committee*



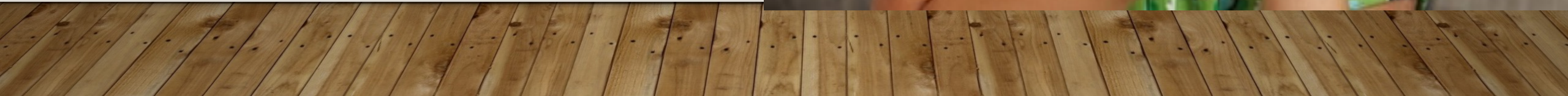
INSPIRATION FOR ENER-JOY

- A little girl in pigtails holds mom's hand as she walks toward the glowing lantern of the Performing Arts Center.
- A bright white dancer—taller than mom—shimmers like frozen music.



INSPIRATION FOR ENER-JOY

*In this moment of pure wonder, our little girl decides,
“I want to be like that.”*



SCULPTURE CONCEPT

- After meeting with The Art Selection Committee, it was clear to me you are looking for sculpture with energy and presence enough to draw attention to the artistic side of Marshalltown--sculpture which reflects the joy, passion, pride and excitement you bring to the arts.



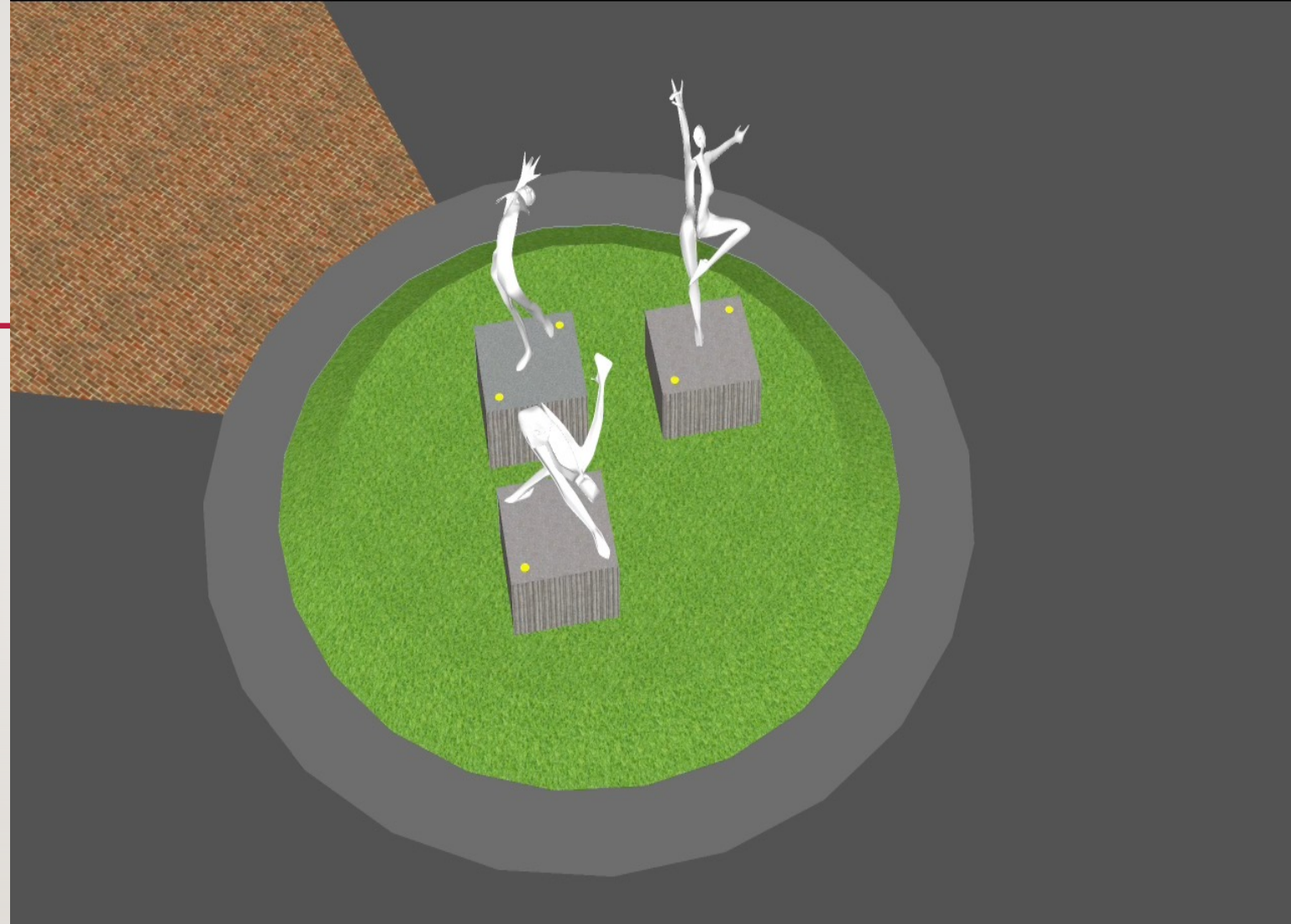
SCULPTURE CONCEPT

- The theme of Energy combines joy, passion, pride and excitement with a big visual footprint to draw attention to what fine art can be.
- The three figures stand alone yet move together as you move about them.
- Against a wall, each sculpture stands eight feet tall—heroic size.



SCULPTURE CONCEPT

- The three-part EnerJoy placed in the arrival circle of the Performing Arts Center depicts the flow of Energy from performer to audience and back again.
- The sculptures represent the Opening Rush, the Performance Euphoria and the Closing Gratitude.



OPENING RUSH

- Every stage performance begins with an attention grabbing moment inviting us to buy in.



OPENING RUSH

- Energy flows from the performer to the audience. The tallest sculpture depicts The Big Moment. The performance arrests your attention and prepares you for the experience to come.



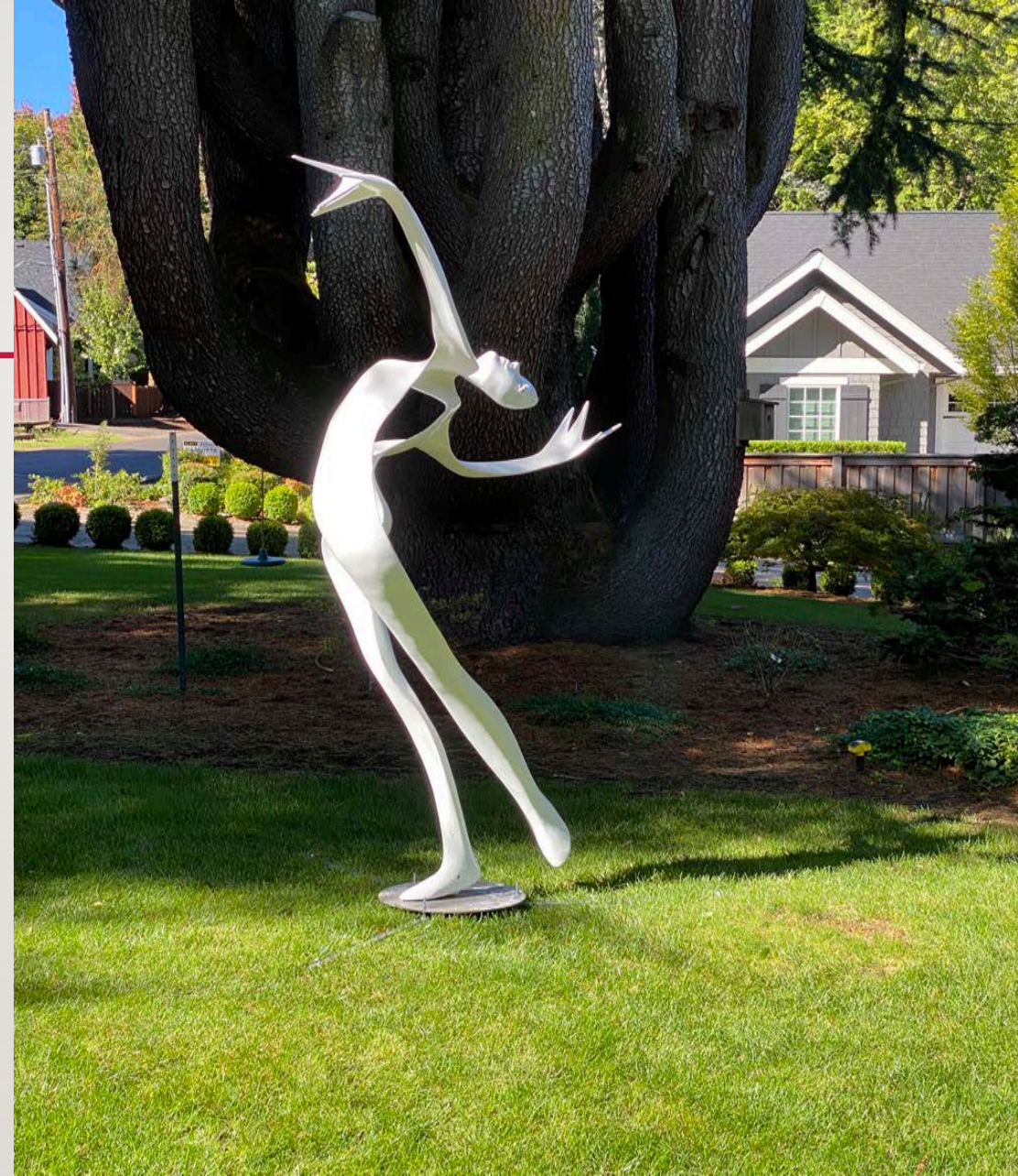
PERFORMANCE EUPHORIA

- Once we buy in, the best performances offer us the 'sublime moment' when all else in our lives melts away.



PERFORMANCE EUPHORIA

- Performance Energy flows from our universe to our souls. The performers envelop our every thought and sensitivity. Everyday frustrations melt away and we float in the arms of the performance before us.



CLOSING GRATITUDE

- The final triumphant bow offers us the opportunity to appreciate the performers.



CLOSING GRATITUDE

- Energy then flows back from us to the performers. Our convergence is about to be broken and we vent our energy of gratitude with the ovation. This completes our Energy triad.



PROJECT GOALS

- Our sculpture project seeks to mark the Marshalltown Performing Arts Center as exciting, inviting and different from its surroundings by meeting the following Goals.



GOAL: CELEBRATE THE ARTS

- All performances live between the opening curtain and the encore bow.



GOAL: CELEBRATE THE ARTS

- The elegant memory of the performance energy lives in our hearts even after the details become dim. The image of white dancers becomes the central memory of all the joy past performances brought us. They become not a thing, but a feeling.



GOAL: IGNITE THE ARTS

- We all live “onstage.” Performance art makes our personal stage larger. As we invite more lives to performance art, we create more performance. More performance ignites bigger stages for everyone.



GOAL: IGNITE THE ARTS

- Ener-joy is an invitation to participate. Soon everyone will know about the white sculptures. They will become both a landmark and an icon of Marshalltown arts.
- Once people accept the invitation, the magic of performance art will spread from heart to heart.



GOAL: AMPLIFY THE ARTS

- The structure—the stage and seats and lights—forms the canvas for a performance experience.



GOAL: AMPLIFY THE ARTS

- The right placemaking sculpture illuminates that special canvas and the performers onstage. First time and veteran attendees will see the potential first, then the structure. Performers will see this as a special place dedicated to appreciating art.



GOAL: PROVIDE A “WOW FACTOR” DRAWING ATTENTION & INVITING PEOPLE TO ENTER

- Energy flow and elegant movement in placemaking sculpture dedicates and distinguishes a setting.



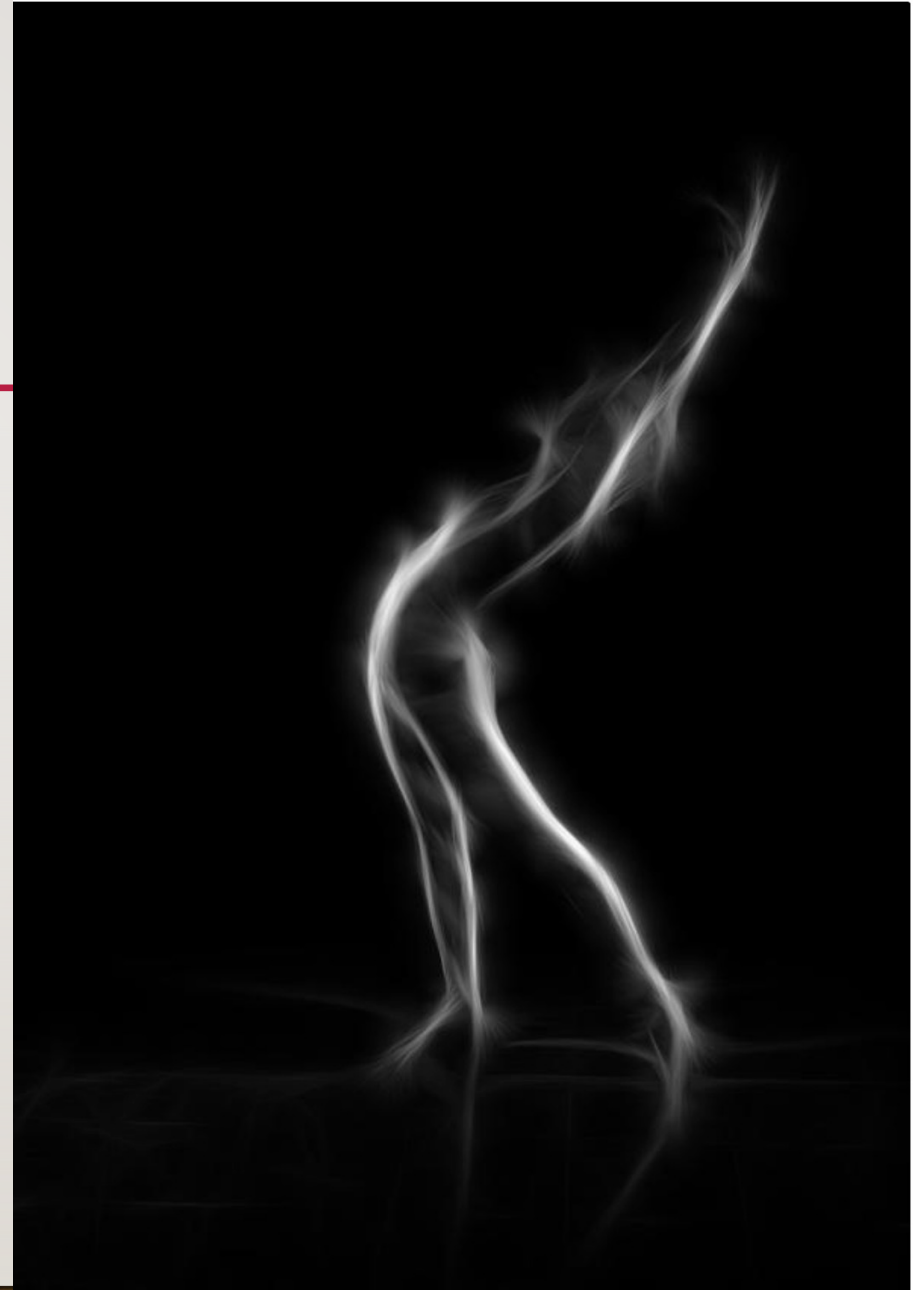
GOAL: PROVIDE A “WOW FACTOR” DRAWING ATTENTION & INVITING PEOPLE TO ENTER

- A lucid enticement draws us to see what dwells within the sculpture and the setting. White sculptures on our path to the center’s doors prepare us for the beauty to come. Our minds open and transform without a word being spoken.



GOAL: PAY TRIBUTE TO LONG- STANDING HISTORY & TALENTED ACTORS PERFORMING IN THE CENTER

- What better tribute than fine art. Sculpture is frozen music. The beauty of a song, a drama or a melody might dim with time. The sculpture never will.



GOAL: PAY TRIBUTE TO LONG- STANDING HISTORY & TALENTED ACTORS PERFORMING IN THE CENTER

- The fact of the performance and the inspiration of the moment dwell forever in the spirit of the sculpture. All performance comes from human form. Figurative sculpture represents those human performers.



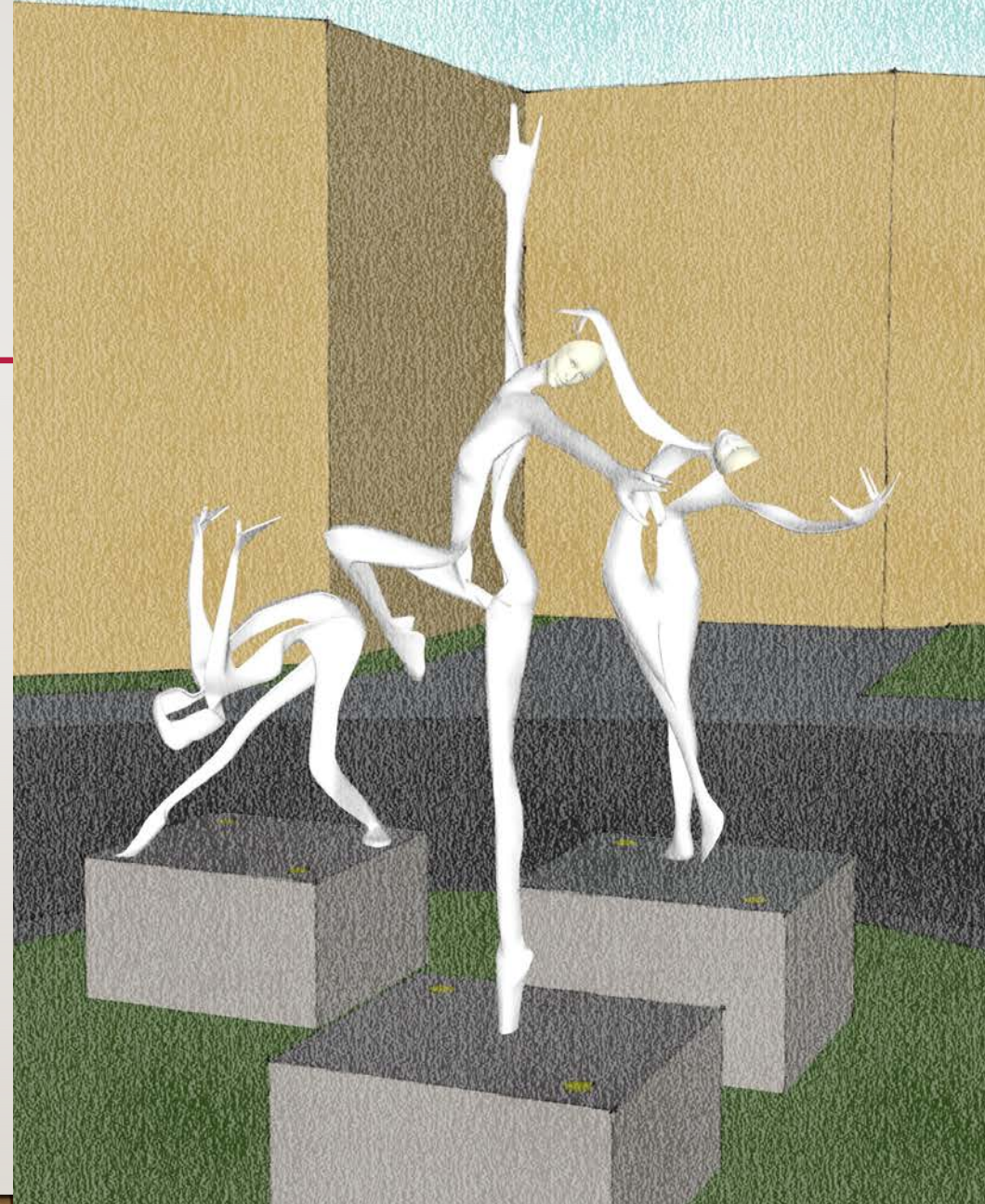
GOAL: BALANCE/EXEMPLIFY SUPPORT FOR ARTS ALONGSIDE SUPPORT OF ATHLETICS ON THE CAMPUS

- Placemaking sculpture invites you to experience performance art—art where everyone wins.



GOAL: BALANCE/EXEMPLIFY SUPPORT FOR ARTS ALONGSIDE SUPPORT OF ATHLETICS ON THE CAMPUS

- Prominent fine art reminds us there is always more to experience in our hearts and minds.
- When top athletes study ballet, it reminds us of the complex tapestry of art and competition we all represent.



THE CREATION OF ENER-JOY

- I sculpt performers in their lightest airiest form. Each sculpture is handcrafted carbon fiber. Measured by tensile modulus, carbon fiber is ten times stronger than steel and one-fifth the weight--perfect for light flowing forms.



THE CREATION OF ENER-JOY

- I coat the sculpture with seven layers of polyurethane primer, base coat, pearl coat and clear coat, producing a deep reflective shine.



THE CREATION OF ENER-JOY

- Together the carbon fiber composite and the urethane coatings provide a tough and exceptionally durable sculpture. These sculptures have withstood many years of tough weather and high winds.



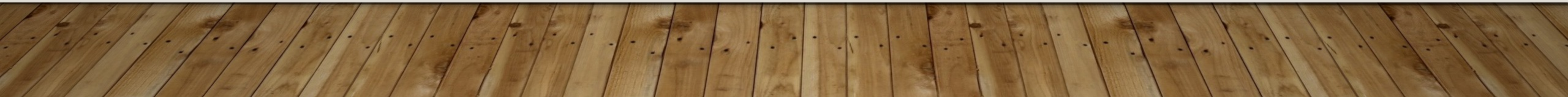
SOME RECENT SCULPTURES

- In 2020, Sculpture Evergreen (Colorado) commissioned a heroic tribute to the 50th anniversary of Peggy Fleming's Olympic Gold Medal in figure skating. Peggy unveiled the sculpture in September, 2020.



SOME RECENT SCULPTURES

- In 2020, the City of Edmond, Oklahoma, commissioned heroic size tennis players for their new tennis complex including 26 outdoor courts, 4 stadium courts and 6 indoor courts.



SOME RECENT SCULPTURES

- In 2019, the City of Lone Tree, Colorado, selected my Mountain Spell sculpture for the entry to their Lone Tree Performing Arts Center.



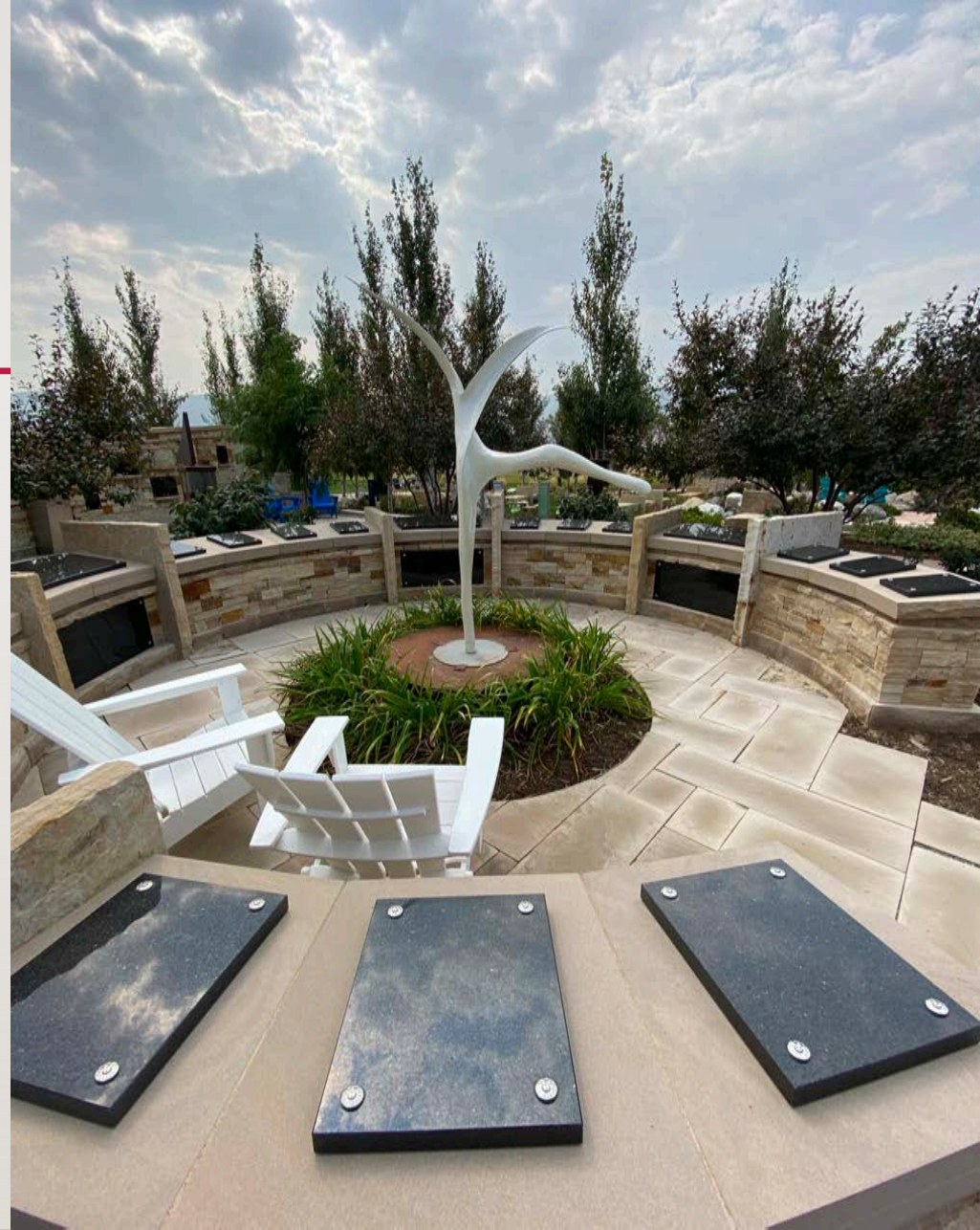
SOME RECENT SCULPTURES

- In 2018, Silverthorne, Colorado, requested abstract figures for placement at their new Performing Arts Center.



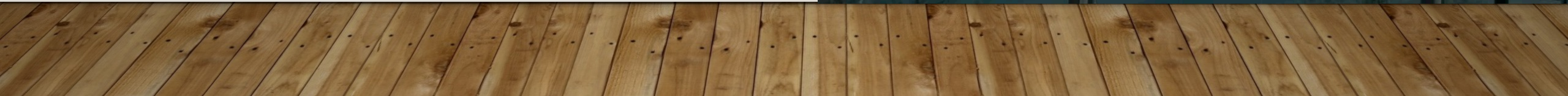
SOME RECENT SCULPTURES

- My sculptures have garnered top awards in juried shows in Aurora, Colorado; Greeley, Colorado; Dallas, Texas; Keystone, Colorado; Lakewood, Colorado; and Sheridan, Wyoming.



ENER-JOY

- I make sculpture especially for you. These gestures of joy and radiance belong to you, your eye and your heart. Whether you accept them as my visual gift or offer them for others to savor, your en-joy-ment is uniquely now and never-before.



ENER-JOY

- Thanks for taking the time to review my proposal. I am available anytime at 303 475-2409 (cell or text) for questions.
- I hope to be chosen to make this marvelous tribute.
- Harold Linke
- 353 G Avenue, Lake Oswego, Oregon 97034
- Harold@LinkeSculpture.com
- www.LinkeSculpture.com

